

# Rental Equipment



## Content

<b>03</b>	<b>Rental Equipment</b>
<b>04</b>	<b>Lifting Clamps</b>
<b>06</b>	<b>Load Cells</b>
<b>07</b>	<b>Dynamometers</b>
<b>08</b>	<b>Rack Jacks and Accessories</b>
<b>09</b>	<b>Blocks</b>
<b>09</b>	<b>Hoists</b>
<b>14</b>	<b>Trolleys</b>
<b>15</b>	<b>Lifting Magnets</b>
<b>15</b>	<b>Air Chain Hoists</b>
<b>16</b>	<b>Lifting Beams</b>
<b>18</b>	<b>Man Riding Basket</b>
<b>19</b>	<b>Water Weights</b>
<b>19</b>	<b>Forklift Jib</b>
<b>20</b>	<b>Master Links</b>
<b>20</b>	<b>Swivels</b>
<b>21</b>	<b>Roundslings</b>
<b>22</b>	<b>Shackles</b>
<b>26</b>	<b>Cargo Scates</b>
<b>27</b>	<b>Gantry Crane</b>
<b>28</b>	<b>Spooling Machines</b>
<b>28</b>	<b>Tension Machines</b>
<b>28</b>	<b>Lubrication Devices</b>
<b>30</b>	<b>Rental Conditions</b>
<b>31</b>	<b>Our Industries, Products &amp; Services</b>





Wide  
range

# Rental Equipment

Rental enables you to have temporary access to a complete set-up of lifting tools, convenient for project based operations.

We know it is crucial to have the right lifting equipment ready for use and adapted to the different phases of projects.

CERTEX Danmark A/S rents equipment which is tested and checked in accordance with existing regulations and includes certificate. We have a standard range of rental equipment ready, but if you have special requirements, we will solve that as well.

Contact our rental department via e-mail:  
[rental-loadtest@certex.dk](mailto:rental-loadtest@certex.dk)

## Our rental equipment range

- Jacks
- Dynamometers
- Heavy-duty Cargo Scates
- Crane Weighers
- Lifting Magnets
- Lifting Beams
- Lifting Clamps
- Roundslings
- Shackles (up to WLL 500 t)
- Lubrication Devices
- Spooling Machines (up to WLL 80 t)
- Hoists, Trolleys and Winches
- Tension Machines
- Water Weights

# Lifting Clamps

## Beam Clamp Superclamp Universal

The beam clamp can be fully loaded at any angle, that means 90° in 360° rotation. Designed for side load applied at full rated capacity. With its low headroom, it can be used as a single or twin lifting point. Good “grip” and quick mounting. Light weight.

**Proof load:** 2 x WLL.

**Finish:** Yellow powdercoated.

**Safety factor:** 5:1



**Note:** All WLL are only for vertical lift.



Part code	WLL ton	Code	Jaw opening mm	Weight kg/m
18.DK45BK030-336	3	ESV3	60-200	6,5
18.DK45BK030-338	3	ESV3	60-200	6,5
18.DK45BK030-339	3	ESV3	60-200	6,5
18.DK45BK050-547	5	S3A	150-305	15
18.DK45BK050-548	5	S3A	150-305	15
18.DK45BK050-738	5	S3A	150-305	15
18.DK45BK050-87	5	S3A	150-305	15
18.DK45BK050-921	5	S3A	150-305	15
18.DK45BK050-922	5	S3A	150-305	15
18.DK45BK100-662	6,096	S4S	203-457	28
18.DK45BK100-102	10	S4A	203-457	28
18.DK45BK100-186	10	S4A	203-457	28
18.DK45BK100-814	10	S4A	203-457	28
18.DK45BK100-598	10	USC5D	76-190	33
18.DK45BK100-602	10	USC5D.	40	33
18.DK45BK100-603	10	USC5D.	40	33
18.DK45BK100-608	10	USC5D.	40	33
18.DK45BK100-813	10	S11	89-305	28
18.DK45BK060-662	6,096	S4S	203-457	19

## Beam Clamp Superclamp

Beam clamp with one piece adjustable design and shackle.

**Proof load:** 2,5 x WLL for certification of each batch produced.

Fatigue rated for 20,000 cycles at 1.5 x WLL.

**Material:** Quenched and tempered alloy steel.

**Marking:** Code, supplier ID, traceability.

**Temperature range:** -40° up to +200°C (without reduction in WLL).

**Finish:** Yellow powdercoated.

**Standard:** ANSI/ASME B30.20

**Safety factor:** 5:1



Part code	WLL ton	Jaw opening mm	Weight kg
18.DK45BK200-609	20	203 - 457	66
18.DK45BK200-610	20	203 - 457	66
18.DK45BK200-611	20	203 - 457	66
18.DK45BK200-612	20	203 - 457	66



## Vertical Lifting Clamp IP10

The IP10 vertical lifting clamp is used for the lifting, turning, moving or vertical transfer of sheet, plates, or fabrications from horizontal to vertical and down to horizontal (180°) as needed. Usually used as a single point pick or when used with a spreader beam with multiple vertical drop lines.

**Marking:** According to standard, CE, supplier ID, WLL, jaw capacity, serial number, proof load date.

**Finish:** Orange/blue painted.

**Standard:** EN 13155.



**Warning:** A minimum load of 10% of the WLL is required.



Part code	WLL ton	Jaw opening mm	Weight kg
18.DK45PK010-250	1	0-22	2,4
18.DK45PK015-810	1,5	0-22	10
18.DK45PK015-811	1,5	0-22	10

## Screw-lifting Clamp

Universal screw clamp for vertical and horizontal lifting and transporting of a large variety of steel structures. Can also be attached upside down and be used as a (temporary) lifting point.

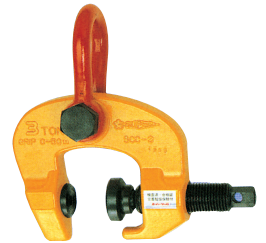
**Marking:** WLL, size, steel quality, supplier ID and traceability.

**Temperature range:** -40° up to +100°C.

**Finish:** Yellow painted.



**Warning:** Hardness level of the material surface may not exceed 37 HRC (345 Hb, 1166 N/mm<sup>2</sup>)



Part code	WLL ton	Jaw opening mm	Weight kg
18.DK45PK030-180	3	0-50	6
18.DK45PK030-181	3	0-50	6
18.DK45PK030-317	3	0-50	6
18.DK45PK030-552	3	0-50	6
18.DK45PK030-553	3	0-50	6
18.DK45PK030-554	3	0-50	6
18.DK45PK060-614	6	0-75	18
18.DK45PK060-615	6	0-75	18
18.DK45PK060-616	6	0-75	18
18.DK45PK060-617	6	0-75	18
18.DK45PK060-618	6	0-75	18
18.DK45PK060-619	6	0-75	18
18.DK45PK060-620	6	0-75	18
18.DK45PK060-621	6	0-75	18

# Load Cells

## Scotload Load Cell



Part code	Code	Weight kg
18.DK45CLC2100-558C	0-100MT. S/N 2100-558C	14
18.DK45CLC2100-559C	0-100MT. S/N 2100-559C	14
18.DK45CLC2100-597C	0-100MT. S/N 2100-597C	16
18.DK45CLC2100-598C	0-100MT. S/N 2100-598C	16

## Straightpoint Compression Load Cell

Center of gravity calculation. 4 compression load cells. To be rented incl. PC and operator.

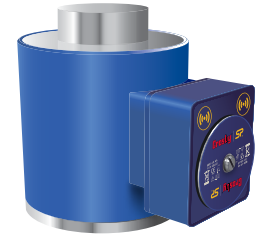
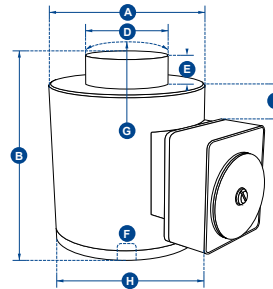
**Model:** WNI25TC-TS

**Temperature range:** -20° up to +70°C .

**Accuracy:** ±0.1% of full scale.

**Range:** 1000 m (100 m with bluetooth).

**Safety factor:** 3:1



Part code	WLL ton	ØA mm	B mm	ØD mm	E mm	F mm	G mm	H mm	I mm	Weight kg
18.DK45CLC025X4-999	25	100	127	59	16	M18 x 2,5	152	158	22	6,2



# Dynamometers

## Dynamometer

Dynamometer with wireless display for remote reading.



Part code	WLL ton	Code	Weight kg
18.DK45DYNA00501	0,5	PH	2,3
18.DK45DYNA2.5-016T4	2,5	WW	1,4
18.DK45DYNA2005-193A	5	WW	2
18.DK45DYNA2005-694T	5	WW	2
18.DK45DYNA13745	12	WW	3,2
18.DK45DYNA2012-764T	12	WW	3,2
18.DK45DYNA2012-863T	12	WW	3,2
18.DK45DYNA108067	12,5	WW	3,22
18.DK45DYNA2012-830T	12,5	WW	3,22
18.DK45DYNA2025-734D	25	WW	5
18.DK45DYNA3025-001T	25	WW	5
18.DK45DYNA3025-048T	25	PH	5
18.DK45DYNA3025-052T	25	PH	5
18.DK45DYNA3025-074T	25	PH	5
18.DK45DYNA2035-160A	35	WW	8,6
18.DK45DYNA2035-94A	35	WW	8,6
18.DK45DYNA1101004HC	50	PH	11,5
18.DK45DYNA2050-118A	50	WW	11,5
18.DK45DYNA205012264	50	WW	11,5
18.DK45DYNA2050-356D	50	WW	11,5
18.DK45DYNA2050-62A	50	WW	11,5
18.DK45DYNA2050-734T	50	WW	11,5
18.DK45DYNA2050-787T	50	WW	11,5
18.DK45DYNA2075-233T	75	WW	16
18.DK45DYNA1304001HD	100	WW	34
18.DK45DYNAATTM907	100	WW	34
18.DK45DYNA13523	150	WW	46
18.DK45DYNA2150-22A	150	WW	46
18.DK45DYNA250007T24	500	WW	408
18.DK45DYNA250008T24	500	WW	408

## Load Shackle

Load shackle with wireless display.



Part code	WLL ton	Code	Weight kg
18.DK45DYNA2200-02S	200	WW	254

## Rack Jacks and Accessories

### Holmatro Rack Jack

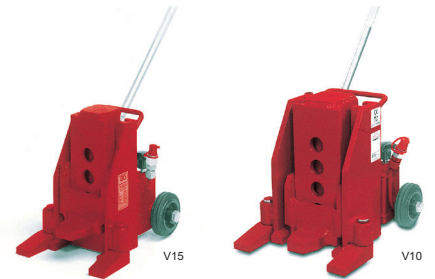
Hollow plunger cylinder.  
Compact design.  
Usable in all positions.



Part code	WLL ton	Code	Max. working pressure bar/Mpa	Connection	Weight kg
18.DK45DK012-510	12	HHJ 12 S 5	720 / 72	A 118	6,3
18.DK45DK012-511	12	HHJ 12 S 5	720 / 72	A 118	6,3
18.DK45DK012-513	12	HHJ 12 S 5	720 / 72	A 118	6,3
18.DK45DK017-557	17	HHJ 17 S 5	720 / 72	A 118	7,3
18.DK45DK017-558	17	HHJ 17 S 5	720 / 72	A 118	7,3
18.DK45DK017-560	17	HHJ 17 S 5	720 / 72	A 118	7,3

### GKS Perfekt Jacks

This hydraulic jack is extremely robust, easy to operate and designed to be extremely safe. It is built with the proven one-piece height-adjustable safety rope - manufactured with a high safety margin.  
It also includes a release valve that allows the load to be lowered accurately and carefully, plus a safety valve for overload protection.



Part code	WLL ton	Code	Stroke mm	Loading height min./max. mm	Lifting height top plate mm	Working pressure bar	L x B x H mm	Weight kg
18.DK45DK100-818	10	V10	160	20 - 170	310	520	339x240x310	32
18.DK45DK100-819	10	V10	160	20 - 170	310	520	339x240x310	32

## Rack Jacks and Accessories



Part code	Code	Description	Weight kg
18.DK45PP200-126	Power Pack	210 bar - 925 kg	
18.DK45PT150-307	Padeye tester with 2 cylinders	Max. 15 ton pull	
18.DK45PTMA-944	Hydraulic manometer Enerpac DGR2		0,5
18.DK45PTPU1-942	Hydraulic hand pump Enerpac P392		2,5
18.DK45PTPU2-943	Hydraulic hand pump Enerpac P392		2,5
18.DK45PTSL1-940	Hydraulik hose 6,1 m Enerpac		2
18.DK45PTSL2-941	Hydraulic extension hose 6,1 m Enerpac		2
18.DK45PTST012-937	Hydraulic cylinder Enerpac RCH-120 WLL 12 t		1,5
18.DK45PTST030-938	Hydraulic cylinder Enerpac RCH-306 WLL 30 t		21,8
18.DK45PTST060-939	Hydraulic cylinder Enerpac RCH-603 WLL 60 t		28,1



## Blocks

### Snatch Block

Snatch block intended for general lifting purposes.  
Furnished with bronze bushing. Provided with shackle and pressure lube fittings.



Part code	WLL ton	Rope Ø mm	Sheave diameter mm	Weight kg
18.DK45KB040-001	4	10-12	115	6
18.DK45KB040-002	4	10-12	115	6
18.DK45KB040-003	4	10-12	115	6
18.DK45KB040-004	4	10-12	115	6
18.DK45KB180-679	18	20-22	250	144
18.DK45KB350-678	35	32-38	560	130
18.DK45KB500-664	50	38-42	600	418
18.DK45KB550-97	55	38-42	530	450
18.DK45KB1200-112	120	42	900	1122

## Hoists

### Electric Chain Hoist

LIFTKET electric chain hoist with suspension hook and lifting height up to 25 m.

#### Design (LIFTKET):

- Power supply 400 V, 3 phase, 50 Hz
- FEM ratings from FEM 1 Bm to 4 m (ISO M3 til M7)
- Protection class IP55, insulation class F
- Galvanized load chain according to DIN 818-7 quality class DAT
- Optional one or two lifting speeds from 2 to 32 m/min
- With heavy-duty end position switch-off as standard (at 24VAC)
- Safety at heights up to 200 meters
- Patented safety-brake-clutch system
- Modular hoist design



Part code	WLL ton	Code	Lifting height m	Weight kg
18.DK45ET016-741	1,6	LIFTKET	25	72
18.DK45ET016-913	1,6	LIFTKET	25	72
18.DK45ET020-910	2,0	KITO	15	74
18.DK45ET032-709	3,2	LIFTKET	9	105
18.DK45ET032-710	3,2	LIFTKET	12	105
18.DK45ET032-743	3,2	LIFTKET	25	105

## Manual Chain Hoist KITO CF

Chain hoist KITO CF with WLL up to 3 ton is a light weight tool. The double covered housing protects the gear from dirt and water. High quality bearings enable a long term service. The precision gear is constructed to use the block with low exertion.

**Material:** High impact aluminium housing, nickel-plated load chain in grade 10, steel hand chain.

**Marking:** Nameplate with WLL, CE-marking and serial number.

**Finish:** Surface treated aluminium.

**Safety factor:** 4:1



Part code	WLL ton	Code	Lifting height m	Weight kg
18.DK45KT005-715	0,5	CF	3	11
18.DK45KT005-919	0,5	CF	3	11
18.DK45KT005-920	0,5	CF	3	11
18.DK45KT010-198	1	CF	6	13
18.DK45KT010-204	1	CF	3	13
18.DK45KT010-205	1	CF	3	13
18.DK45KT010-224	1	CF	6	13
18.DK45KT010-524	1	CF	3	13
18.DK45KT010-525	1	CF	3	13
18.DK45KT010-526	1	CF	5	13
18.DK45KT010-531	1	CF	3	13
18.DK45KT010-532	1	CF	6	13
18.DK45KT010-876	1	CF	8	13
18.DK45KT010-877	1	CF	8	13
18.DK45KT015-120	1,5	CF	6	18
18.DK45KT015-122	1,5	CF	3	18
18.DK45KT015-343	1,5	CF	3	18
18.DK45KT015-345	1,5	CF	3	18
18.DK45KT015-346	1,5	CF	3	18
18.DK45KT015-347	1,5	CF	3	18
18.DK45KT015-348	1,5	CF	6	18
18.DK45KT015-349	1,5	CF	6	18
18.DK45KT020-153	2	CF	3	21
18.DK45KT020-154	2	CF	3	21
18.DK45KT020-155	2	CF	3	21
18.DK45KT020-803	2	CF	3	21
18.DK45KT030-18	3	CF	6	28
18.DK45KT030-40	3	CF	7	28
18.DK45KT030-41	3	CF	7	28
18.DK45KT030-42	3	CF	5	28
18.DK45KT030-43	3	CF	8	28
18.DK45KT030-44	3	CF	5	28
18.DK45KT030-45	3	CF	6	28
18.DK45KT030-46	3	CF	5	28
18.DK45TK050-163	5	CF	3	41
18.DK45TK050-176	5	CF	6	41
18.DK45TK050-255	5	CF	25	41
18.DK45TK050-256	5	CF	25	41
18.DK45TK050-315	5	CF	6	41
18.DK45TK050-316	5	CF	3	41
18.DK45TK050-34	5	CF	10	41
18.DK45TK050-36	5	CF	6	41
18.DK45KT100-10	10	CF	10	83
18.DK45KT100-491	10	CF	3	83
18.DK45KT100-492	10	CF	3	83
18.DK45KT150-507	15	CF	3,5	155
18.DK45KT150-508	15	CF	3,5	155
18.DK45KT200-433	20	CF	3,5	235



## Lever Hoist KITO LB

Standard lever hoist KITO LB with freewheel chain adjusting mechanism.

Double-reduction gearing requires minimum manual power for operation at full load.

**Material:** Housing of impact-resistant steel, nickel-plated load chain Grade V (G100) according to EN 818-7.

**Marking:** Nameplate with WLL, CE-marking and serial number.

**Finish:** Painted.

**Safety factor:** 4:1



Part code	WLL ton	Code	Lifting height m	Weight kg
18.DK45ST008-703	0,8	LB	3,5	7,1
18.DK45ST008-704	0,8	LB	3,5	7,1
18.DK45ST016-740	1,6	LB	6	8
18.DK45ST025-431	2,5	LB	10	11,2
18.DK45ST063-167	6,3	LB	10	26
18.DK45ST063-259	6,3	LB	10	26
18.DK45ST063-261	6,3	LB	3,0	26
18.DK45ST090-624	9	LB	1,7	40
18.DK45ST090-777	9	LB	1,7	40
18.DK45ST090-778	9	LB	1,7	40

## Air Chain Hoist

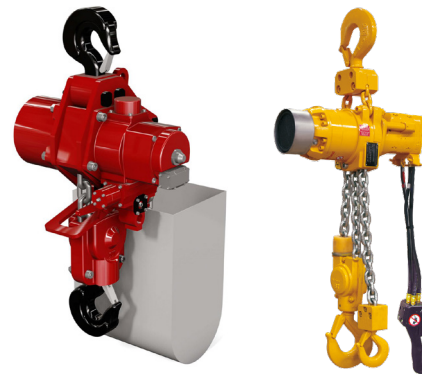
Air chain hoist with hook in top and bottom.

Durability:

- Grade 80 calibrated corrosion-resistant load chain
- Automatic multi disc brake fully enclosed for better corrosion resistance
- Drain holes in block prevent deterioration due to trapped water
- For Ingersoll Rand 25 ton air chain hoist, it is possible to get lift height up to 21 m

**Material:** All steel construction.

**Safety factor:** 5:1



Part code	WLL ton	Code	HOL. m	Control pressure m
18.DK45LT250-21	25	INGERSOLL RAND	7,5	10
18.DK45LT250-22	25	INGERSOLL RAND	10,65	10
18.DK45LT250-23	25	INGERSOLL RAND	11,9	10
18.DK45LT250-24	25	INGERSOLL RAND	12,4	10
18.DK45LT250-32	25	INGERSOLL RAND	0	10
18.DK45LT250-632	25	RED ROOSTER	25	10
18.DK45LT250-633	25	RED ROOSTER	25	10
18.DK45LT250-869	25	INGERSOLL RAND	5	5
18.DK45LT250-870	25	INGERSOLL RAND	5	5
18.DK45LT250-871	25	INGERSOLL RAND	5	5
18.DK45LT250-872	25	INGERSOLL RAND	5	5
18.DK45LT250-873	25	INGERSOLL RAND	5	5
18.DK45LT250-874	25	INGERSOLL RAND	5	5

## Air Chain Hoist

Air chain hoist in compact design and with low noise level.



Part code	WLL ton	Code	Lifting height m	Control pressure m
18.DK45LT010-31	1	YOKATA	3 (20)	2
18.DK45LT060-478	6	REDROOSTER	10	10
18.DK45LT060-479	6	REDROOSTER	10	10
18.DK45LT060-480	6	REDROOSTER	10	10
18.DK45LT060-481	6	REDROOSTER	22	10
18.DK45LT060-482	6	REDROOSTER	10	10
18.DK45LT060-483	6	REDROOSTER	15	10
18.DK45LT060-527	6	REDROOSTER	10	10
18.DK45LT060-54	6	INGERSOLL RAND	30	10
18.DK45LT060-88	6	INGERSOLL RAND	20	10
18.DK45LT100-895	10	REDROOSTER	22	10



## Air Chain Hoist Ingersoll Rand

Air chain hoist Ingersoll Rand with hook in top and bottom.

Durability:

- Grade 80 calibrated corrosion-resistant load chain
- Automatic multi disc brake fully enclosed for better corrosion resistance
- Drain holes in block prevent deterioration due to trapped water
- For Ingersoll Rand 12 ton air chain hoist, it is possible to get lift height up to 44 m.

**Material:** All steel construction.

**Standard:** EN 1492-2.

**Safety factor:** 5:1



Part code	WLL ton	Falls	Headroom mm	HOL. m	Control pressure m	Weight with 3 m chain kg
18.DK45LT120-26	12	2	945	10	20	170
18.DK45LT120-27	12	2	945	10	20	170
18.DK45LT120-277	12	2	945	10	10	170
18.DK45LT120-278	12	2	945	10	20	170
18.DK45LT120-279	12	2	945	10	20	170
18.DK45LT120-280	12	2	945	10	20	170
18.DK45LT120-367	12	2	945	10	10	170
18.DK45LT120-368	12	2	945	11	10	170
18.DK45LT120-373	12	2	945	10	20	170
18.DK45LT120-374	12	2	945	10	20	170
18.DK45LT120-850	12	2	945	22	5	170
18.DK45LT120-851	12	2	945	22	5	170
18.DK45LT120-852	12	2	945	22	5	170
18.DK45LT120-853	12	2	945	22	5	170
18.DK45LT120-854	12	2	945	22	5	170
18.DK45LT120-855	12	2	945	22	5	170
18.DK45LT120-856	12	2	945	22	5	170
18.DK45LT120-857	12	2	945	22	5	170
18.DK45LT120-858	12	2	945	22	5	170
18.DK45LT120-859	12	2	945	22	5	170
18.DK45LT120-860	12	2	945	22	5	170
18.DK45LT120-861	12	2	945	22	5	170
18.DK45LT120-862	12	2	945	22	5	170
18.DK45LT120-863	12	2	945	22	5	170
18.DK45LT120-864	12	2	945	22	5	170
18.DK45LT120-865	12	2	945	22	5	170
18.DK45LT120-866	12	2	945	22	5	170
18.DK45LT120-867	12	2	945	22	5	170
18.DK45LT120-868	12	2	945	22	5	170
18.DK45LT120-887	12	2	945	20	5	170
18.DK45LT120-888	12	2	945	20	5	170
18.DK45LT120-889	12	2	945	20	5	170
18.DK45LT120-890	12	2	945	20	5	170
18.DK45LT120-891	12	2	945	20	5	170
18.DK45LT120-892	12	2	945	20	5	170
18.DK45LT120-893	12	2	945	20	5	170
18.DK45LT120-894	12	2	945	20	5	170

# Trolleys

## Push Trolley

Push trolley with large steel wheels and rubber bumpers to absorb shock loads on impact to rail ending.



Part code	WLL ton	Flange width mm	Weight kg
18.DK45LK050-756	5	114-203	40
18.DK45LK050-757	5	114-203	40

## Geared Trolley

Geared trolley operated by chain, with large steel wheels.



Part code	WLL ton	Hand chain cm	Flange width mm	Weight kg
18.DK45LK100-780	10	270	310	90
18.DK45LK100-781	10	270	310	90

## Electric Trolley

Electric trolley with remote control.  
Power supply 400 volt.



Part code	WLL ton	Flange width mm	Weight kg
18.DK45LK050-844	5	180-300	81

## Lifting Magnets

### Lifting Magnet

Permanent lifting magnet with fixed lifting eye and handle with heavy rubber coating.

 **Note:** Lifting capacity is based on lifting of clean and flat steel plate, with the full area of the magnetic polar area in contact with the load.



Part code	WLL ton	Code	Weight kg
18.DK45LMA020-836	2	NEO2000	90
18.DK45LMA020-837	2	NEO2000	90
18.DK45LMA020-838	2	NEO2000	90
18.DK45LMA020-839	2	NEO2000	90
18.DK45LMA020-840	2	NEO2000	90

## Air Hoists

### Air Hoist Ingersoll Rand

Designed for the demanding conditions found in tough environments with dirty air, these winches feature a low maintenance, highly reliable gear motor with high torque output that translates into smooth starts and stops. Light weight and compact for portability, yet the rugged all ductile iron construction makes it ready to take on your most challenging applications.

**Standard:** Liftstar® winches meet the U.S. standard ASME/ANSI B30.7 and additionally meet the European standards FEM 9.511 and FEM 1001 for lifting. The FEM 9.511 establishes a durability rating which is 1Bm.

**Safety factor:** 5:1



Part code	WLL ton	Code	Wire diameter mm
18.DK45LS015-454	1,5	LS1500R-PH	10
18.DK45LS015-485	1,5	LS1500R-PH2M-Q-E	10
18.DK45LS020-830	2	FORCE 5	10
18.DK45LS100-284	10	FA10-40XK1	25
18.DK45LS100-625	10	FA10-40XK1	32

# Lifting Beam

## Lifting Beam LO

This type of lifting beam functions primarily as a spreader beam meaning that a 2-part sling (included with rent) must be used between the crane hook and the lifting beam. The lifting beam is designed with 2x3 lifting points, which makes it possible to have several different types of attachments mounted on the lifting beam at the same time.

**Proof load:** 1,5 x WLL.

**Design:** Lightweight welded pipe beam construction providing good torsional stiffness.

**Material:** Hollow beam and plate manufactured with high-strength structural steel.



Part code	WLL ton	Code	WLL 90° ton	Length mm	Height min./max. mm	Weight kg
18.DK45LAA030-690	3	LO-5/2	5	2.000	1370/950	68
18.DK45LAA030-691	3	LO-5/3	5	3.000	1870/1235	89
18.DK45LAA030-692	3	LO-5/4	5	4.000	2370/1525	110
18.DK45LAA030-693	3	LO-5/5	5	5.000	2885/1830	151
18.DK45LAA030-742	3	LO-5/6	5	6.000	3385/2135	173

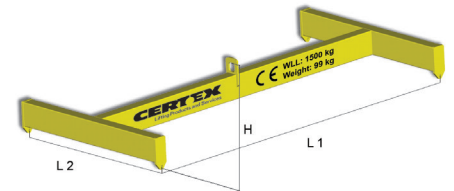
## Lifting Beam H

This type of lifting beam cannot be adjusted and is designed for direct attachment with the crane hook in the central lifting eye. The lifting beam is designed with one lifting point in each corner and is based on lifting assignments in all four lifting points.

**Proof load:** 1,5 x WLL.

**Design:** Lightweight welded pipe beam construction providing good torsional stiffness.

**Material:** Hollow beam and plate manufactured with high-strength structural steel.



Part code	WLL ton	Code	L1 mm	L2 mm	H mm	Weight kg
18.DK45LAA015-816	1,5	H-1.5/2-1.5 Ton	2.000	1.500	310	102

## Cross Beam

Fixed cross beam, with no possibility of adjustment.

With 4 attachment points and 5 lifting points.

**Dimensions:** H: 167 cm, W: 3010 cm, L: 6030 cm, cross: 6030 cm.



**Note:** 4-part lifting sling, shackles and lifting sling are not included.



Part code	WLL ton	Model	Weight kg
18.DK45LAA440-817	440	Cross beam	15000



## Modular Spreader Beam 12 ton

Modular spreader beams are ideal for most lifting jobs – broadly applicable and cost effective. Modulift MOD 12 is available with a capacity up to 12 t at 4,75 m.



Part code	Model	
18.DK45LAA120-936	12 ton lifting beam 12 t	Mounted with 2x17 t and 2x12 t shackles
18.DK45LAA120-936-1	0,5 m. strut for MODULIFT 12 t	
18.DK45LAA120-936-2	2 m. strut for MODULIFT 12 t	
18.DK45LAA120-936-3	2 m. strut for MODULIFT 12 t	
18.DK45LAA120-936-4	2 m. strut for MODULIFT 12 t	

## Modular Spreader Beam 250 ton

Modular spreader beams also for heavier lifting.



Part code	Model	
18.DK45LAA2500-842	250 ton lifting beam 3 m.	Mounted with 2x125 t and 2x220 t wide body shackles
18.DK45LAA2500-842-1	1 m strut for MODULIFT 250 T. SN. 20M000017	
18.DK45LAA2500-842-2	3 m strut for MODULIFT 250 T. SN. 23M000020	
18.DK45LAA2500-842-3	6 m strut for MUDULIFT 250 T. SN. 26M000020	

## Modular Spreader Beam 400/600

Modular spreader beams also for heavier lifting.



Part code	Model	
18.DK45LAA6000-843	400/600 t lifting beam 3 m MODULIFT 400/600	Mounted with 2x300 t and 2x400 t wide body shackles

## Lifting Beam for Water Weights

Lifting beam for 3 pcs. water weights.



Part code	Model	WLL ton
18.DK45LAA360-290	Lifting beam for 3 pcs.water weights	36

## Man Riding Basket

### Man riding basket for max. 4 persons

Man riding baskets can be used quickly and safely for temporary working at heights. Our man riding baskets are designed to be hung from a crane hook.

**Design:** Welded frame in hollow beam with the bottom and sides covered in expanded-metal mesh. Equipped with an inwardly hinged door.

Personal items of safety equipment can be attached to the inside handrail. The basket is supported underneath for easy handling by truck or forklift. A gate is provided on one of the short side.

The basket is supplied complete with a four leg wire rope sling and a masterlink.



Part code	Weight basket kg	WLL t	Max. number of persons	Basket LxBxH mm	Height with wire rope sling H mm	Specifikation
18.DK45MANDSKABSKURV-1	400	1	4	2000x1200x2100	4700	BK-1000E

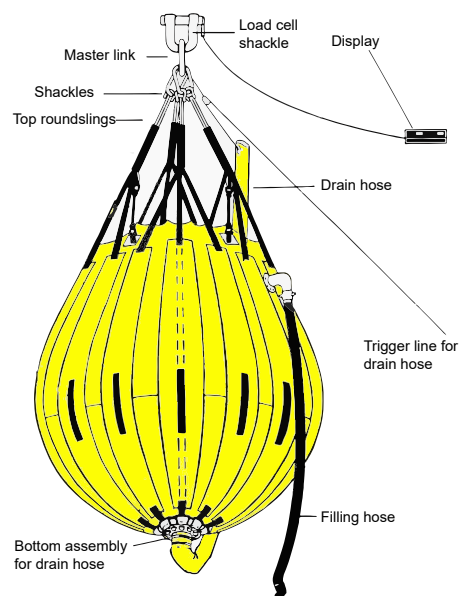


## Water Weights

### Water Weight

Load tests of structures with a very high weight can be carried out both onshore and offshore with Water Weights.

Water Weights are special designed bags, which allows testing everything from cranes to aircraft decks, and from bridges to lifeboats.



Part code	WLL ton	Specification
18.DK45WW375	0,375	375
18.DK45WWB5-08	2	B5-08
18.DK45WWBS02-26L	2	BS02-26L
18.DK45WWBS02-27L	2	BS02-27L
18.DK45WWB5-05	5	B5-05
18.DK45WWB5-07	5	B5-07
18.DK45WW10-26	10	20-26
18.DK45WWBS10-44	10	BS10-44
18.DK45WWBS10-45	10	BS10-45
18.DK45WWBF12-1L	12	BF12-1L
18.DK45WWBS12-2L	12	BS12-2L
18.DK45WWBS12-505	12	BS12-505
18.DK45WWBS20-34B	20	BS20-34B
18.DK45WWB35-161	35	B35-161
18.DK45WWB35-52	35	B35-52
18.DK45WWBS35-116B	35	BS35-116S
18.DK45WWBS35-143	35	BS35-143
18.DK45WWBS35-147	35	BS35-147
18.DK45WWBS35-152	35	BS35-152
18.DK45WWBS35-154	35	BS35-154
18.DK45WWBS35-161	35	B35161
18.DK45WWBS35-90	35	BS35-90

## Truck accessories

### Forklift Jib

Telescopic sliding arm for lifting in positions 6-10. The arm can be raised in 15-degree steps, up to 45 degrees. It is equipped with a support wheel that can be raised and is also demountable. Supplied complete with shackle and swivel safety hook.



Part code	Type	Fork dimension mm	Distance to hook mm	Hook opening mm	Max. load kg	Transport measurement cm	Weight kg
18.DK45TA030-238	6913	155x60 - 125x50	700 - 3700 mm	44	3000 - 600	56x74x222	215
18.DK45TA030-059	6913	155x60 - 125x50	700 - 3700 mm	44	3000 - 600	56x74x222	215

## Master Links

### Master Link

**Material:** Quenched and tempered alloy steel.

**Marking:** WLL, size, steel quality, supplier ID and traceability.

**Temperature range:** -40° up to +200°C (without reduction in WLL).

**Finish:** Powdercoated.

**Standard:** EN 1677-1.

**Grade:** 10.

**Safety factor:** 4:1



Part code	WLL ton	Dimensions mm	Weight kg
18.DK45OR160-63	16	40x250x140	4,78
18.DK45OR400-239	40	45x400x200	24,10
18.DK45OR400-240	40	45x400x200	24,10
18.DK45OR840-548	84	72x440x250	45
18.DK45OR157-807	157	100x500x300	97
18.DK45OR157-808	157	100x500x300	97
18.DK45OR157-809	157	100x500x300	97

## Swivels

### Swivel GN

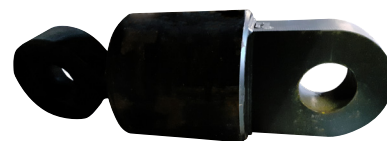
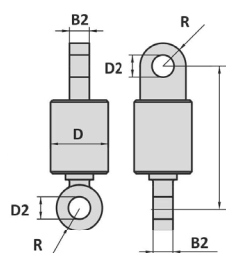
**Material:** High-tensile steel.

**Temperature range:** -20° up to +200°C.

**Finish:** Painted.

**Standard:** EN 10204.

**Safety factor:** 5:1



Part code	WLL ton	Code	B1 mm	B2 mm	B3 mm	D1 mm	D2 mm	D mm	E mm	L mm	R mm	Weight kg
18.DK45SV1200-555	120	øje/øje	155	140	90	152	155	430	190	920	170	666
18.DK45SV1200-556	120	øje/øje	155	140	90	152	155	430	190	920	170	666



# Roundslings

## Roundsling

Roundsling from high strength polyester yarn having a strong protective cover.

**Material:** Polyester.

**Marking:** According to standard, blue label with supplier ID, WLL, length, CE-marking and a label with instruction for use.

**Temperature range:** -40° up to +100°C.

**Standard:** EN 1492-2.

**Safety factor:** 7:1



Part code	WLL ton	Length (EWL) m	Weight kg
18.DK45RS010-219	10	12	4,8
18.DK45RS010-221	10	12	4,8
18.DK45RS010-951	10	5	2
18.DK45RS010-952	10	5	2
18.DK45RS012-640	12	8	3
18.DK45RS015-589	15	3	20
18.DK45RS020-570	20	3,5	24
18.DK45RS020-688	20	4	32
18.DK45RS020-689	20	4	32
18.DK45RS025-841	25	1,5	7,1
18.DK45RS400-784	40	2	11
18.DK45RS400-785	40	2	11
18.DK45RS600-789	60	8	284
18.DK45RS100-923	100	3	86
18.DK45RS125-758	125	7	344
18.DK45RS125-759	125	7	344
18.DK45RS125-760	125	7	344
18.DK45RS125-761	125	7	344

# Shackles

## Bow Shackle with Safety Bolt Green Pin® G-4163

Shackle with bolt and pin.

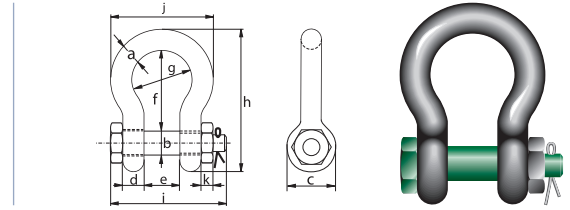
**Material:** Bow and pin high tensile steel, Grade 6.

**Marking:** According to standard.

**Temperature range:** -20°C up to +200°C.

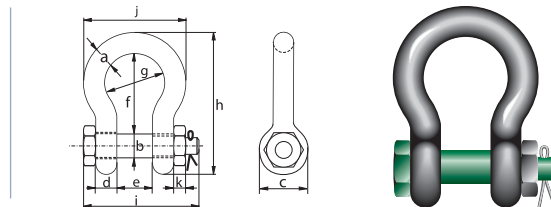
**Standard:** EN 13889.

**Safety factor:** 6:1



Part code	WLL ton	A	B	C	D	e	f mm	g	h	i	j	k	Weight kg
18.DK45SJA065-772	6,5	22	25	52	22	36	83	58	144	130	102	22	1,77
18.DK45SJA065-775	6,5	22	25	52	22	36	83	58	144	130	102	22	1,77
18.DK45SJA065-780	6,5	22	25	52	22	36	83	58	144	130	102	22	1,77
18.DK45SJA065-924	6,5	22	25	52	22	36	83	58	144	130	102	22	1,77
18.DK45SJA085-847	8,5	25	28	59	25	43	95	68	164	150	118	25	2,58
18.DK45SJA012-716	12	32	35	72	32	51	115	83	201	178	147	30	4,91
18.DK45SJA012-718	12	32	35	72	32	51	115	83	201	178	147	30	4,91
18.DK45SJA012-720	12	32	35	72	32	51	115	83	201	178	147	30	4,91
18.DK45SJA012-732	12	32	35	72	32	51	115	83	201	178	147	30	4,91
18.DK45SJA012-734	12	32	35	72	32	51	115	83	201	178	147	30	4,91
18.DK45SJA012-736	12	32	35	72	32	51	115	83	201	178	147	30	4,91
18.DK45SJA012-737	12	32	35	72	32	51	115	83	201	178	147	30	4,91
18.DK45SJA013-749	13,5	35	38	80	35	57	133	92	227	197	162	33	6,54
18.DK45SJA013-750	13,5	35	38	80	35	57	133	92	227	197	162	33	6,54
18.DK45SJA013-751	13,5	35	38	80	35	57	133	92	227	197	162	33	6,54
18.DK45SJA013-752	13,5	35	38	80	35	57	133	92	227	197	162	33	6,54
18.DK45SJA013-753	13,5	35	38	80	35	57	133	92	227	197	162	33	6,54
18.DK45SJA013-754	13,5	35	38	80	35	57	133	92	227	197	162	33	6,54
18.DK45SJA013-764	13,5	35	38	80	35	57	133	92	227	197	162	33	6,54
18.DK45SJA013-765	13,5	35	38	80	35	57	133	92	227	197	162	33	6,54
18.DK45SJA170-932	17	38	42	88	38	60	146	99	249	202	175	19	8,19
18.DK45SJA170-933	17	38	42	88	38	60	146	99	249	202	175	19	8,19
18.DK45SJA170-934	17	38	42	88	38	60	146	99	249	202	175	19	8,19
18.DK45SJA170-935	17	38	42	88	38	60	146	99	249	202	175	19	8,19
18.DK45SJA250-635	25	45	50	103	45	74	178	126	300	249	216	23	17
18.DK45SJA250-636	25	45	50	103	45	74	178	126	300	249	216	23	17
18.DK45SJA250-639	25	45	50	103	45	74	178	126	300	249	216	23	17
18.DK45SJA250-644	25	45	50	103	45	74	178	126	300	249	216	23	17
18.DK45SJA250-645	25	45	50	103	45	74	178	126	300	249	216	23	17
18.DK45SJA250-911	25	45	50	103	45	74	178	126	300	249	216	23	17
18.DK45SJA250-912	25	45	50	103	45	74	178	126	300	249	216	23	17
18.DK45SJA250-925	25	45	50	103	45	74	178	126	300	249	216	23	17
18.DK45SJA250-926	25	45	50	103	45	74	178	126	300	249	216	23	17
18.DK45SJA250-927	25	45	50	103	45	74	178	126	300	249	216	23	17
18.DK45SJA350-643	35	50	57	111	50	83	197	138	331	269	238	26	21
18.DK45SJA350-684	35	50	57	111	50	83	197	138	331	269	238	26	21
18.DK45SJA350-695	35	50	57	111	50	83	197	138	331	269	238	26	21
18.DK45SJA350-696	35	50	57	111	50	83	197	138	331	269	238	26	21
18.DK45SJA350-697	35	50	57	111	50	83	197	138	331	269	238	26	21
18.DK45SJA350-722	35	50	57	111	50	83	197	138	331	269	238	26	21
18.DK45SJA350-723	35	50	57	111	50	83	197	138	331	269	238	26	21
18.DK45SJA350-724	35	50	57	111	50	83	197	138	331	269	238	26	21
18.DK45SJA350-928	35	50	57	111	50	83	197	138	331	269	238	26	21
18.DK45SJA350-929	35	50	57	111	50	83	197	138	331	269	238	26	21
18.DK45SJA350-930	35	50	57	111	50	83	197	138	331	269	238	26	21
18.DK45SJA350-931	35	50	57	111	50	83	197	138	331	269	238	26	21

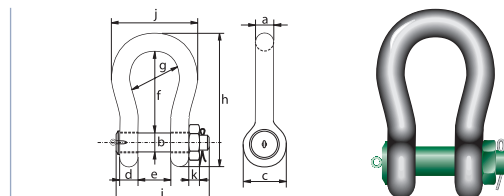
## Bow Shackle with Safety Bolt Green Pin® G-4163 (continued)



Part code	WLL ton	A	B	C	D	e	f mm	g	h	i	j	k	Weight kg
18.DK45SJA550-563	55	65	70	145	65	105	260	180	433	330	310	32	30
18.DK45SJA550-566	55	65	70	145	65	105	260	180	433	330	310	32	30
18.DK45SJA550-595	55	65	70	145	65	105	260	180	433	330	310	32	30
18.DK45SJA550-596	55	65	70	145	65	105	260	180	433	330	310	32	30
18.DK45SJA550-641	55	65	70	145	65	105	260	180	433	330	310	32	30
18.DK45SJA550-642	55	65	70	145	65	105	260	180	433	330	310	32	30
18.DK45SJA550-656	55	65	70	145	65	105	260	180	433	330	310	32	30
18.DK45SJA550-657	55	65	70	145	65	105	260	180	433	330	310	32	30
18.DK45SJA550-658	55	65	70	145	65	105	260	180	433	330	310	32	30
18.DK45SJA550-659	55	65	70	145	65	105	260	180	433	330	310	32	30
18.DK45SJA550-672	55	65	70	145	65	105	260	180	433	330	310	32	30
18.DK45SJA550-673	55	65	70	145	65	105	260	180	433	330	310	32	30
18.DK45SJA550-674	55	65	70	145	65	105	260	180	433	330	310	32	30
18.DK45SJA550-675	55	65	70	145	65	105	260	180	433	330	310	32	30
18.DK45SJA550-682	55	65	70	145	65	105	260	180	433	330	310	32	30
18.DK45SJA550-683	55	65	70	145	65	105	260	180	433	330	310	32	30
18.DK45SJA550-908	55	65	70	145	65	105	260	180	433	330	310	32	30
18.DK45SJA550-909	55	65	70	145	65	105	260	180	433	330	310	32	30
18.DK45SJA850-312	85	75	83	162	73	12	329	190	527	380	340	39	61
18.DK45SJA850-314	85	75	83	162	73	12	329	190	527	380	340	39	61
18.DK45SJA850-848	85	75	83	162	73	12	329	190	527	380	340	39	61
18.DK45SJA850-849	85	75	83	162	73	12	329	190	527	380	340	39	61

## Heavy Duty Shackle Green Pin® P-6036

Green Pin® bow shackle with safety bolt.  
**Material:** Bow and pin alloy steel, Grade 8.  
**Marking:** According to standard.  
**Safety factor:** 5:1



Part code	WLL ton	A	B	C	D	e	f mm	g	h	i	j	k	Weight kg
18.DK45SJA1200-78	120	95	95	208	91	147	400	238	647	440	428	50	110
18.DK45SJA1200-79	120	95	95	208	91	147	400	238	647	440	428	50	110
18.DK45SJA1500-419	150	95	182	90	144	389	250	703	408	420	42	248	134
18.DK45SJA1500-420	150	95	182	90	144	389	250	703	408	420	42	248	134
18.DK45SJA1500-438	150	95	182	90	144	389	250	703	408	420	42	248	134
18.DK45SJA1500-439	150	95	182	90	144	389	250	703	408	420	42	248	134
18.DK45SJA1500-562	150	95	182	90	144	389	250	703	408	420	42	248	134
18.DK45SJA500-591	500	180	185	398	164	256	718	350	1190	720	710	70	685
18.DK45SJA500-592	500	180	185	398	164	256	718	350	1190	720	710	70	685
18.DK45SJA500-593	500	180	185	398	164	256	718	350	1190	720	710	70	685
18.DK45SJA500-594	500	180	185	398	164	256	718	350	1190	720	710	70	685





**Services  
worldwide**



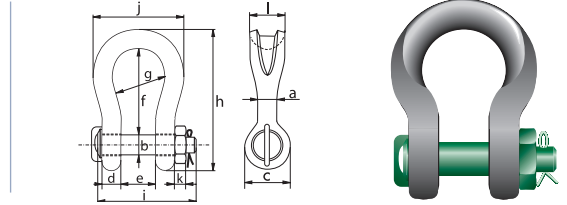
## Sling Shackle Green Pin® P-6033

Shackle with safety bolt.

**Material:** Bow and pin alloy steel.

**Grade:** 8.

**Safety factor:** 5:1



Part code	WLL ton	b	c	d	e	f	g mm	h	i	j	k	l	Weight kg
18.DK45SJA750-896	75	70	125	54	110	290	185	473	327	317	54	120	48
18.DK45SJA750-897	75	70	125	54	110	290	185	473	327	317	54	120	48
18.DK45SJA750-898	75	70	125	54	110	290	185	473	327	317	54	120	48
18.DK45SJA750-899	75	70	125	54	110	290	185	473	327	317	54	120	48
18.DK45SJA1250-820	125	80	166	85	134	364	220	631	382	370	36	205	95
18.DK45SJA1250-821	125	80	166	85	134	364	220	631	382	370	36	205	95
18.DK45SJA1250-900	125	80	166	85	134	364	220	631	382	370	36	205	95
18.DK45SJA1250-901	125	80	166	85	134	364	220	631	382	370	36	205	95
18.DK45SJA1500-822	150	95	182	90	144	389	250	703	408	420	42	248	134
18.DK45SJA1500-823	150	95	182	90	144	389	250	703	408	420	42	248	134
18.DK45SJA2000-824	200	105	204	100	154	479	276	838	446	475	47	290	195
18.DK45SJA2000-825	200	105	204	100	154	479	276	838	446	475	47	290	195
18.DK45SJA2500-768	250	120	238	110	174	539	300	938	503	515	60	314	271
18.DK45SJA2500-907	250	120	238	110	174	539	300	938	503	515	60	314	271
18.DK45SJA3000-826	300	134	260	121	189	599	350	1031	550	605	60	345	368
18.DK45SJA3000-827	300	134	260	121	189	599	350	1031	550	605	60	345	368
18.DK45SJA4000-828	400	160	305	140	224	620	370	1123	645	652	80	392	580
18.DK45SJA4000-829	400	160	305	140	224	620	370	1123	645	652	80	392	580

## Sling Shackle GN H14

Sling shackle.

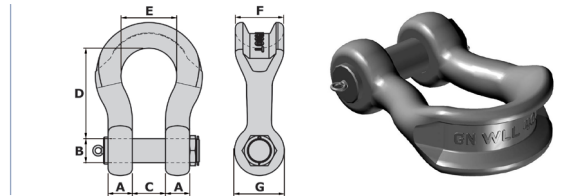
**Material:** Alloy steel.

**Temperature range:** -40°C up to +200°C.

**Finish:** Painted.

**Standard:** Certificate of Conformity 3.1 material certificate EN 10204.

**Safety factor:** 5:1

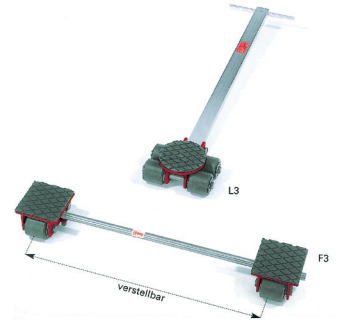


Part code	WLL ton	A	B	C	D mm	E	F	G	Weight kg
18.DK45SJA5000-832	500	170	180	250	650	450	340	350	780
18.DK45SJA5000-833	500	170	180	250	650	450	340	350	780
18.DK45SJA5000-834	500	170	180	250	650	450	340	350	780
18.DK45SJA5000-835	500	170	180	250	650	450	340	350	780

## Cargo Scates

### Cargo Scate GKS

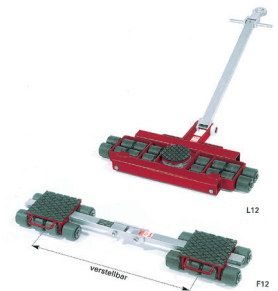
Cargo scate for safe and easy transport of goods.



Part code	WLL ton	Code	Weight kg
18.DK45TH030-726	3	Cargo scate	12
18.DK45TH030-727	3	Cargo scate	12
18.DK45TH030-728	3	Cargo scate	12
18.DK45TH030-729	3	Cargo scate	12

### Cargo Scate GKS

Cargo scate for safe and easy transport of goods.



Part code	WLL ton	Code	Weight kg
18.DK45TH120-797	12	Cargo scate	52
18.DK45TH120-798	12	Cargo scate	52
18.DK45TH120-799	12	Cargo scate	52
18.DK45TH120-800	12	Cargo scate	52

### Cargo Scate VAKS 3000

High quality cargo skate on nylon rollers.



Part code	WLL ton	Code	Weight kg
18.DK45TH030-945	3	VAKS 3000	10
18.DK45TH030-946	3	VAKS 3000	10
18.DK45TH030-947	3	VAKS 3000	10
18.DK45TH030-948	3	VAKS 3000	10
18.DK45TH030-949	3	VAKS 3000	10
18.DK45TH030-950	3	VAKS 3000	10

## Cargo Scate VAKS 6000

Cargo scate on fixed nylon rollers.



Part code	WLL ton	Code	Weight kg
18.DK45TH060-789	6	VAKS 6000	13
18.DK45TH060-790	6	VAKS 6000	13
18.DK45TH060-791	6	VAKS 6000	13
18.DK45TH060-792	6	VAKS 6000	13
18.DK45TH060-793	6	VAKS 6000	13
18.DK45TH060-794	6	VAKS 6000	13
18.DK45TH060-795	6	VAKS 6000	13
18.DK45TH060-796	6	VAKS 6000	13

## Gantry Crane

### FELTES GMBH Gantry Crane

Gantry Crane type AGC-FL-MAXI-1500-300.

Manual chain hoist max. 1500 kg.

Easy to assemble without tools (2 people required)

Transport measurements: 1200 x 3300 mm



Part code	WLL ton	Height mm	Width mm	Length mm	Span meter	Weight kg
18.DK45PK015-162	1.5	2180-4000	2295	3000	3	137

## Spooling Machines

### Spooling Machine

The spooling machine is used for spooling wire ropes on external winches, possibly with tension. It is not possible to read tension. Tension changes every time layer is being changed on the drum.

Max. weight drum:

- 80 mm axle: 20 t
- 100 mm axle: 35 t
- 140 mm axle: 80 t

**Dimensions:** H: 260 cm, W: 245 cm, L: 610 cm.



Part code	Max. width drum mm	Max. dia. drum mm	Weight ton
18.DK45SPOLE10TON	3400	3600	10

## Tensioning Machines

### Tensioning Machine

The tension machine is used for restraint when winding wire ropes on external winches. The machine can hold up to 5 tons of tension. Optimal tension is 10% of WLL on the external winch being rewound.

**Dimensions:** H: 220 cm, W: 250 cm, L: 610 cm.

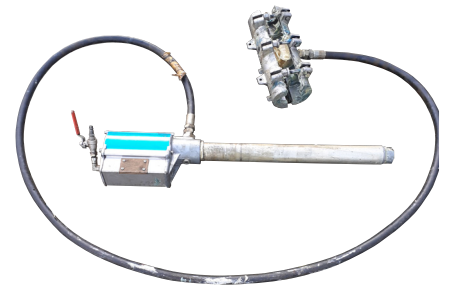


Part code	Code	Max. rope dia. mm	Tension ton	Weight ton
18.DK45TM000-324	Tensioning machine	60	5	5

## Lubrication Device

### MASTO Lubrication Device

For pressure lubrication.



Part code	Code	Dimensions mm
18.DK45SA000-92	ORION 22752/500	10-26



**Spooling of  
rope & wire**





## Rental Conditions for Lifting/Transport Equipment

### 1. Terms and conditions for rental

These terms and conditions shall apply to all agreements on rental of equipment. Variations from the terms and conditions shall only apply provided the parties have agreed on this in writing.

### 2. Quotation and pricing

Rental charge is as shown in the pricelist applicable at any time. The charge is ex warehouse, excl. VAT. For any quotation, estimate or price information submitted by CERTEX Danmark A/S these "Terms and conditions for rental of lifting/transport equipment" shall apply. As to confirmed orders reservations are made regarding price increases that may occur as a consequence of government intervention or order of a public authority.

The rental is invoiced upon return of the rented equipment, and by longer rental periods also monthly. Terms of payment is the already agreed terms for account. Where payment is not made by the final due date interest will be charged per month.

### 3. Collection and return of the rental equipment

The tenant shall be responsible for and pay for both collection of the rented equipment from CERTEX Danmark A/S as well as the return transport of the equipment to a place of storage specified by CERTEX Danmark A/S. CERTEX Danmark A/S could do this service on customer request, and to be confirmed and stated on offer.

### 4. Rental and minimum rental period

The rental period commences from the date where the tenant collects or the goods are shipped. Rental ends on the date the rented equipment is returned again to one of the places of storage of CERTEX Danmark A/S. The minimum rental period is 3 days from pickup unless order confirmation indicates otherwise. The rental is charged per day despite the fact that the rented equipment is returned before the end of the (latest) day.

### 5. Rental charges in case of loss

In case of loss rental charges continue until the rented equipment has been claimed lost or until the date of the compensation amount which has been agreed upon in writing by CERTEX Danmark A/S.

### 6. Purchase of rental equipment

There shall not be a reduction in the rental charge upon any request to buy the rented equipment. Equipment will not normally be for purchase, but special cases can arise. If equipment is sold from CERTEX Danmark A/S rental stock, a written offer shall be sent from caseworker at CERTEX Danmark A/S. Despite the age and the condition of the equipment, no warranty claims will be accepted on purchased rental equipment to CERTEX Danmark A/S.

### 7. Tenants inspection duty

The rented equipment is delivered by CERTEX Danmark A/S in an operational and legal condition, including operating instructions and any certificates. After receipt the tenant is obliged to inspect the rented equipment so that it does not give rise to any complaints.

### 8. Use of rented equipment

The rented equipment shall only be used for the purpose(s) and load which appears from the order operating manual. The tenant shall not make changes to the rented equipment, including remove or move fastenings, etc. The tenant is obliged

to ensure that the rented equipment is used in compliance with regulations and legislation, to file reports to authorities and inspectorates, and to provide all necessary permits.

Rental, lending or other transfer to third party shall not take place without written consent from CERTEX Danmark A/S.

The rented equipment may not without written consent leave Denmark.

### 9. Maintenance and repair

During the rental period the tenant is obliged to carry out safety and operational maintenance of the rented equipment. Repair of the rented equipment may only be performed by CERTEX Danmark A/S or repaired by designated company and only upon prior agreement.

The tenant is obliged to return the rental equipment in the same condition (incl. cleaning) as it was received, apart from normal wear and tear. Any subsequent cleaning, repair, and rental charges for the time used for this shall be paid by the tenant.

### 10. Liability

The tenant shall be held liable for loss or damage to the rented equipment and for violation of the provisions set out in these terms and conditions. The tenant shall be held liable for loss or damage that may incur on the tenant, CERTEX Danmark A/S, or third party and which is not caused by defects from rental company.

CERTEX Danmark A/S shall under no circumstances be held liable for loss of operation of any kind, loss of profits, other indirect loss or consequential damage, irrespective if such losses/damages can be related to the rental equipment.

Provided CERTEX Danmark A/S should be held liable against third party, the tenant is obliged to indemnify CERTEX Danmark A/S for any liability that may go beyond what the tenant may claim against CERTEX Danmark A/S according to these terms and conditions.

### 11. Delay

CERTEX Danmark A/S shall make all reasonable efforts to comply with the agreed times of delivery. CERTEX Danmark A/S can, however, only be held responsible for delays exceeding 5 days. CERTEX Danmark A/S shall under no circumstances be held liable for loss of operation of any kind, loss of profits, other indirect loss or consequential damage, or for loss related to third party's - including sub supplier's breach.

### 12. Ownership

The rented equipment shall at all times remain the property of CERTEX Danmark A/S. The tenant shall under no circumstances remove labels that indicate the ownership.

### 13. Disputes and legal venue

Should any dispute arise and settlement out of court cannot be reached, the dispute shall be settled by the Court of the location of CERTEX Danmark A/S home as agreed venue. This legal matter shall be governed by Danish law. However, the Convention on Contracts for the International Sale of Goods shall not apply to the legal matter.

### 14. Insurance

Rental equipment will not be insured by CERTEX Danmark A/S in the rental period, but needs to be insured by tenant. If CERTEX Danmark A/S needs to supply documentation in insurance venues for tenant, administration cost can be expected, and will be invoiced on pending order.

# Our Industries, Products & Services

CERTEX Danmark A/S is your safe and reliable partner and supplier of lifting equipment. Below you will find an overview of the industries we serve, our product range and the services we provide.





Based on many years of experience & KnowHow within lifting, load tests & engineering, CERTEX Danmark A/S is your reliable partner and supplier of steel wire rope, lifting applications & related services.

**CERTEX**

Lifting Solutions Group  
Axel Johnson International

Nyvang 16, 2. tv  
DK-5500 Middelfart  
Tel.: +45 74 54 14 37

Virkelyst 17b  
DK-9400 Nørresundby  
Tel.: +45 98 13 18 88

Jernholmen 43-47D  
DK-2650 Hvidovre  
Tel.: +45 36 77 40 30

Olievej 4  
DK-6700 Esbjerg  
Tel.: +45 75 13 08 44

CERTEX Danmark A/S  
Trekanten 6-8  
DK-6500 Vojens  
Tel.: +45 74 54 14 37  
E-mail: [info@certex.dk](mailto:info@certex.dk)  
[www.certex.dk](http://www.certex.dk)